

THE MARK OF QUALITY SINCE 1902

OPERATOR'S INSTRUCTIONS AND PARTS LIST

MEADOWS MILLS, INC.  
1352 WEST D STREET  
PO BOX 1288  
NORTH WILKESBORO, NC 28659  
TOLL FREE: 1-800-626-2282  
TELEPHONE: 336-838-2282  
FAX: 336-667-6501  
EMAIL: [sales@meadowsmills.com](mailto:sales@meadowsmills.com)  
WEBSITE: [www.meadowsmills.com](http://www.meadowsmills.com)

# **Operating Instructions for the Andrus Hand Filer**

## **Unpacking your Andrus Hand Filer:**

- Loosen the set screw on the handle (A). Turn the handle 180 degrees, and tighten the set screw.
- Using a flat head screwdriver and 7/16" wrench, advance the four adjustment screws (F) on the side of the filer frame (S) to an even depth of 1/4". Using your 7/16" wrench tighten nut (E) against the filer frame (S) while holding the screw (F) with your screwdriver.
- Tighten the jam nut (N), which is found at the end of the shaft (K), firmly to insure that the rotary file set (L) is held in place properly.

## **Aligning your Andrus Hand Filer:**

- Place the filer on the saw so that the flat steel slide (V), located on the under side of the lip on the filer frame (S), rests on at least 2 teeth. The flat steel slide (V) should rest on at least 2 teeth for proper support and balance. The side block (I) should be adjusted so that the side crank (H) tightens on a shoulder of the saw. Tighten the side crank (H) against the shoulder of the saw.
- Adjust the depth of the four adjustment screws (F) on the side of the filer frame (S) until the filer frame is level on the tooth. The filer frame must be level from side to side to ensure proper operation of the Andrus Hand Filer.
- Position the tooth stop (T), which is located under the wing nut (U) on the filer frame (S), so that the stop rests firmly against the base of the shank.
- The filer frame (S) should be positioned on the saw so that the bearing head (J), the shaft (K), and the rotary file set (L) are centered on the tooth of your saw. Loosen the nut (Y) that holds the eccentric (X) and the bearing head (J) in place. This allows you to set the angle of the rotary file set (L) to match the face of your tooth. Once the angle is set tighten the nut (Y) firmly. Please remember when positioning your Andrus Hand Filer, a 1/8" gap should be left between the rotary file set (L) and the tooth.
- As a final check for the setup of your Andrus Hand filer, loosen the side crank (H) and remove the Andrus Hand Filer from the saw. Using a pen/pencil (not provided) trace the profile of the tooth. Reposition the Andrus Hand Filer on the saw. Sharpen the tooth (see instructions "Operating your Andrus Hand Filer") that you used as your template. Compare the tooth you sharpened to your template to ensure that the filer is setup properly.

## **Operating your Andrus Hand Filer:**

- Once you have properly adjusted your Andrus Hand Filer to fit your saw, you are ready to file.
  1. Using your thumb depress the lever (O). Depressing the lever (O) provides tension between the rotary file set (L) and the tooth. Next, turn the handle (A). Please remember to bring rotary file set (L) into contact with the tooth slowly to ensure a clean evenly sharpened tooth.
- To move to the next tooth simply loosen the side crank (H) and reposition your Andrus Hand Filer to fit your saw. Then follow the above instructions (1).

## **Please Remember**

- The initial setup is more accurate if it is performed on a tooth with little or no wear.
- The Andrus Hand Filer should be setup perfectly square to ensure the best job of sharpening your teeth.

TOLERANCES ±1/16" UNLESS OTHERWISE SPECIFIED  
DIMENSIONS : FT-IN"

THIS DRAWING IS THE PROPERTY OF MEADOWS MILLS INC.  
USE OF THIS DRAWING OTHER THAN TO MANUFACTURE, SELL,  
OR INSTALL MEADOWS MILLS INC. EQUIPMENT IS PROHIBITED.



Meadows Mills Inc.

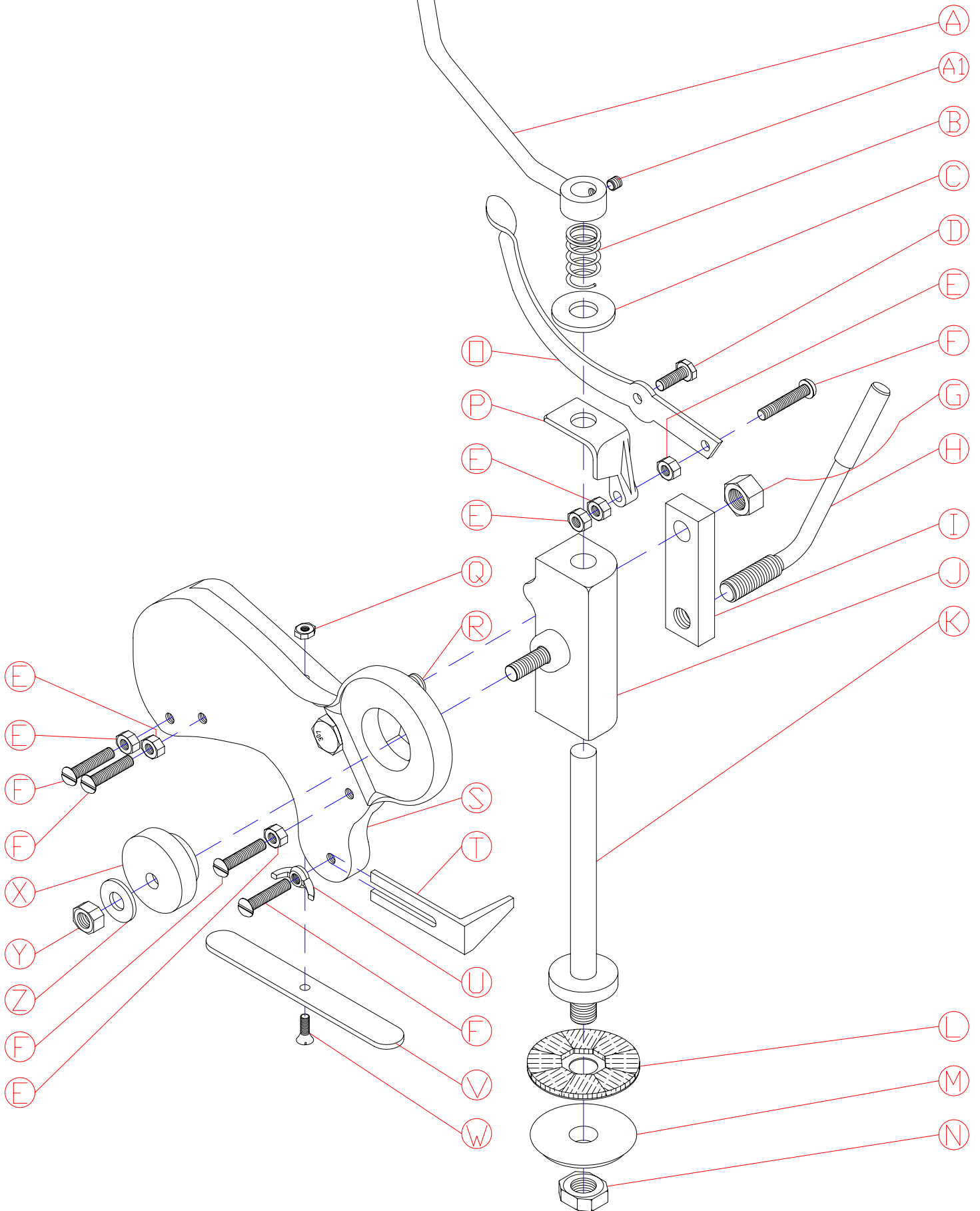
TITLE  
ANDRUS SAW FILE  
HAND OPERATED  
PARTS LIST

SCALE: N/A

DATE: 10/15/01

CAD FILE NAME: ANDRPART04

DRAWN BY: DLT



# ANDRUS HAND SHARPENER COMPLETE

## 65-1000 ANDRUS HAND ROTARY FILER W/ FILE SET 000

### DESCRIPTION

ITEM	QTY.	PART#	DESCRIPTION
A	1	65-1004	HANDLE W/ SET SCREW - HAND FILER
*	A1	1 93-25326	SSS CP 1/4-20 x 1/4"
B	1	65-1-14	SPRING FOR #8 SHAFT - HAND FILER
C	1	93-33087	SAE FLAT WASHER 9/16" PLN
D	1	93-13004	HCS 1/4-20 x 3/4" Z 5
E	6	93-36102	FIN HEX NUT 1/4-20 Z
F	5	93-27696	RND. HEAD SLOTTED MS 1/4-20 x 1-1/4"
G	1	93-36110	FIN HEX NUT 1/2"-13 Z
H	1	65-1007	SIDE CRANK - HAND, ELECTRIC, & AIR
I	1	65-1006	SIDE BLOCK - HAND, ELECTRIC, & AIR FILERS
J	1	65-1002	BEARING HEAD FOR HAND FILER
K	1	65-1008	SHAFT FOR HAND FILER
L	1	65-1018	ROTARY FILE SET FOR HAND FILER
M	1	65-1010	SHIELD FOR HAND FILER
N	1	93-36626	HEX JAM NUT 9/16-18 Z
O	1	65-1003A	LEVER ONLY FOR HAND FILER
P	1	65-1003B	TOGGLE ONLY FOR HAND FILER
Q	1	93-36028	MS NUT 10-24 Z
R	1	93-13213	HCS 1/2-13 x 2-1/2" Z 5
S	1	65-1005	FILER FRAME - HAND
T	1	65-1033	STOP
U	1	93-37745	WING NUT 1/4-20
V	1	65-1017	FLAT STEELE SLIDE - ELEC., AIR, & HAND FILERS
W	1	93-27969	FLAT HEAD SLOTTED MS 10-24 x 5/8" Z
X	1	65-1001	ECCENTRIC - HAND FILERS
Y	1	93-36106	FIN HEX NUT 3/8-16 Z
Z	1	93-33008	USS F/W 3/8" Z

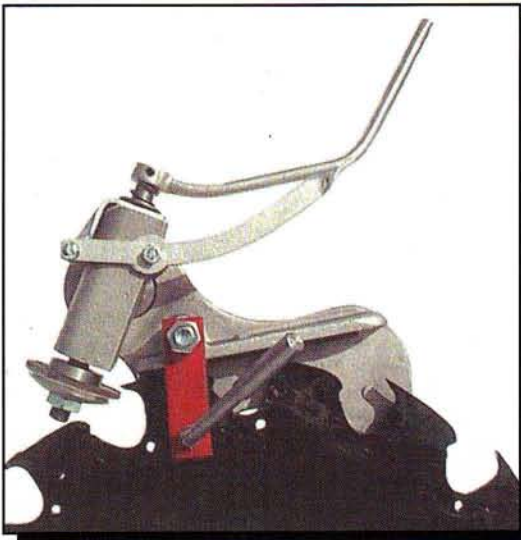
REFERENCE DWG. ANDRPART04 - ITEM #'S WILL  
CORRESPOND WITH THE DRAWING

# Andrus Saw Sharpeners

Manufactured by Meadows Mills, Inc.

Meadows Mills Inc. has combined its nearly 100 years of expertise in manufacturing sawmill equipment with Apex Manufacturing and its nearly 50 years of expertise in manufacturing saw sharpeners to present the Andrus saw sharpener in our continuing effort to be your complete supplier for sawmill equipment.

Andrus saw sharpeners are designed to sharpen the teeth of any inserted tooth saw. An optional diamond wheel is available to sharpen inserted carbide teeth.



*Andrus Hand Filer*

## **Andrus Rotary Hand Filer**

\$ \_\_\_\_\_

- Alloy frame allows for lightweight yet sturdy construction
- Standard construction is right hand, also available in left-hand models
- Simply loosening the side crank moves the filer from tooth to tooth
- Tension on the tooth is provided by a thumb lever
- Weight is only 6 lbs.
- Price includes 1 file set for sharpening standard steel teeth
- Diamond wheel is available for rotary hand filer

## **Andrus Electric Saw Sharpener**

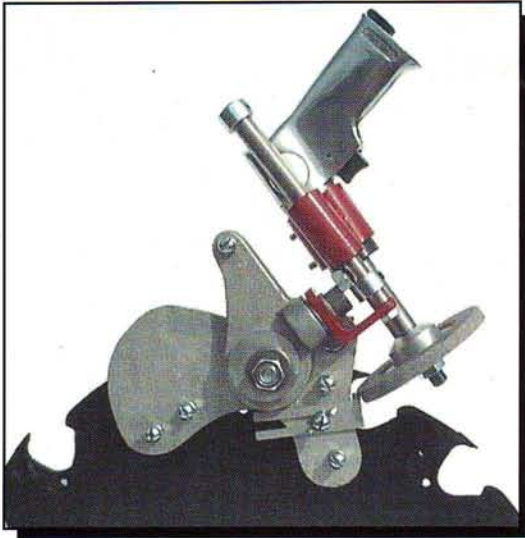
- Sharpener uses a Milwaukee 4 amp, 120 volt/60 hertz, 0-2500-rpm motor
- Also available without motor
- Price includes one 4" emory wheel with 1/2" bore for sharpening standard steel teeth
- Weight is only 9 lbs.

\$ \_\_\_\_\_



*Andrus Electric Saw Sharpener*





*Andrus Air Saw Sharpener*

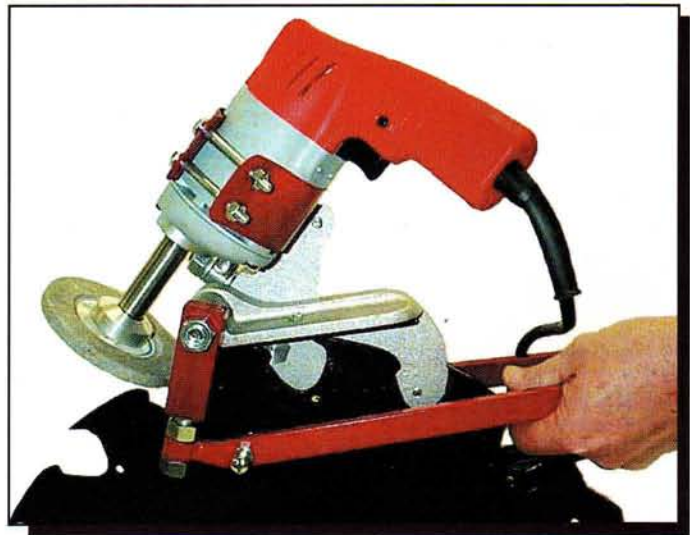
## **Andrus Air Saw Sharpener**

- Uses Northman Industrial Tool 3/8" air drill, 2500-rpm, requires 4 CFM with 3/8" minimum hose diameter
- Also available without motor
- Price includes one 4" emory wheel with 1/2" bore for sharpening standard steel teeth
- Weight is only 8 lbs.

\$ \_\_\_\_\_

## **Andrus Electric Bank Saw Sharpener**

- Also available with air motor or available without motors
- Uses same electric and air motors as specified for previous saw sharpeners
- Hand clamps allow for ease in sharpening banks of saws where side crank cannot be used
- Price includes one 4" emory wheel with 1/2" bore for sharpening standard steel teeth
- Weight for electric bank saw sharpener is only 11 lbs.
- Weight for air bank saw sharpener is only 10 lbs.



*Andrus Electric Bank Saw Sharpener*

\$ \_\_\_\_\_

## **Meadows Mills, Inc.**

*"Mill Manufacturers since 1902"*

1352 West D Street • Post Office Box 1288 • North Wilkesboro, North Carolina 28659  
 Phone: (336) 838-2282 • Fax: (336) 667-6501 • 1-800-626-2282

